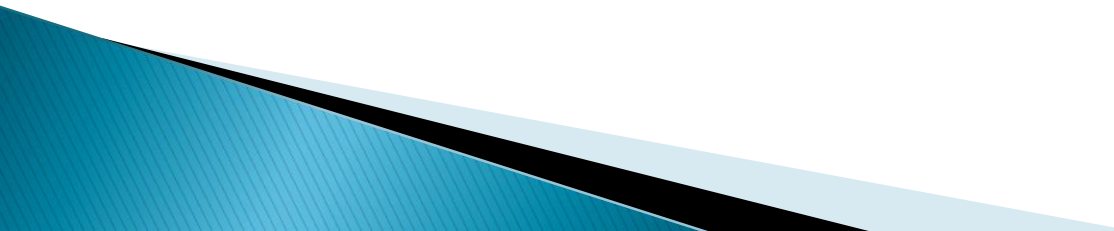


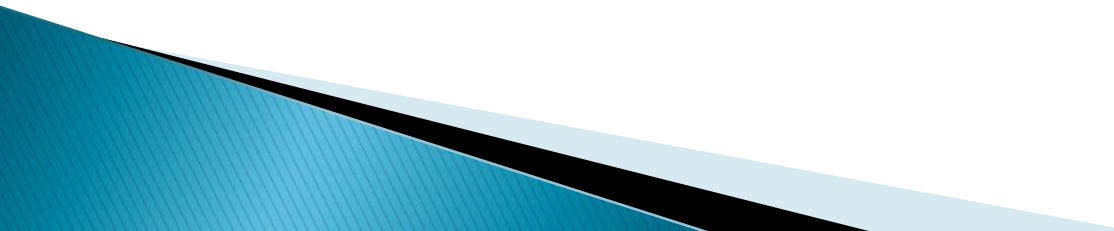
CMC Live Services

Eugene W. Nourminsky
nourminsky@mslab.cs.msu.su

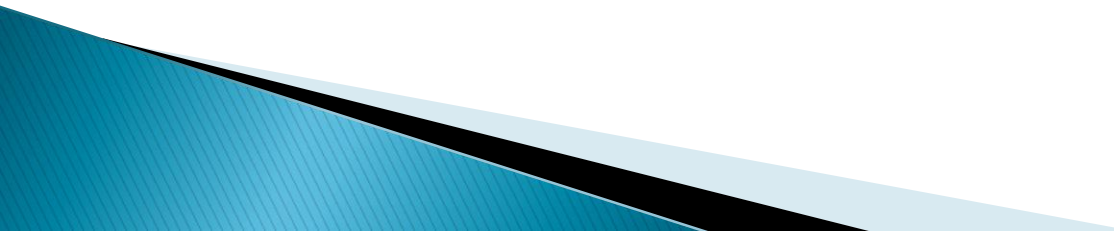
Agenda

- ▶ Intro
 - ▶ What do we have
 - ▶ Opportunities
 - ▶ Our plans
 - ▶ Your plans
- 

Needs

1. Identity Management
 - Control identities in heterogeneous environments
 2. People Networking Services
 - Mail, IM, Web forums, wiki, etc.
 3. Single Sign On
 - Unified credentials
 4. Reduce cost of IT-dept.
- 

Choices

- ▶ Develop custom solution from scratch
 - High costs and vague results, insufficient qualification, requirements
 - ▶ Buy complete solutions
 - Highest cost, integration issues, gap between requirements and software features
- 

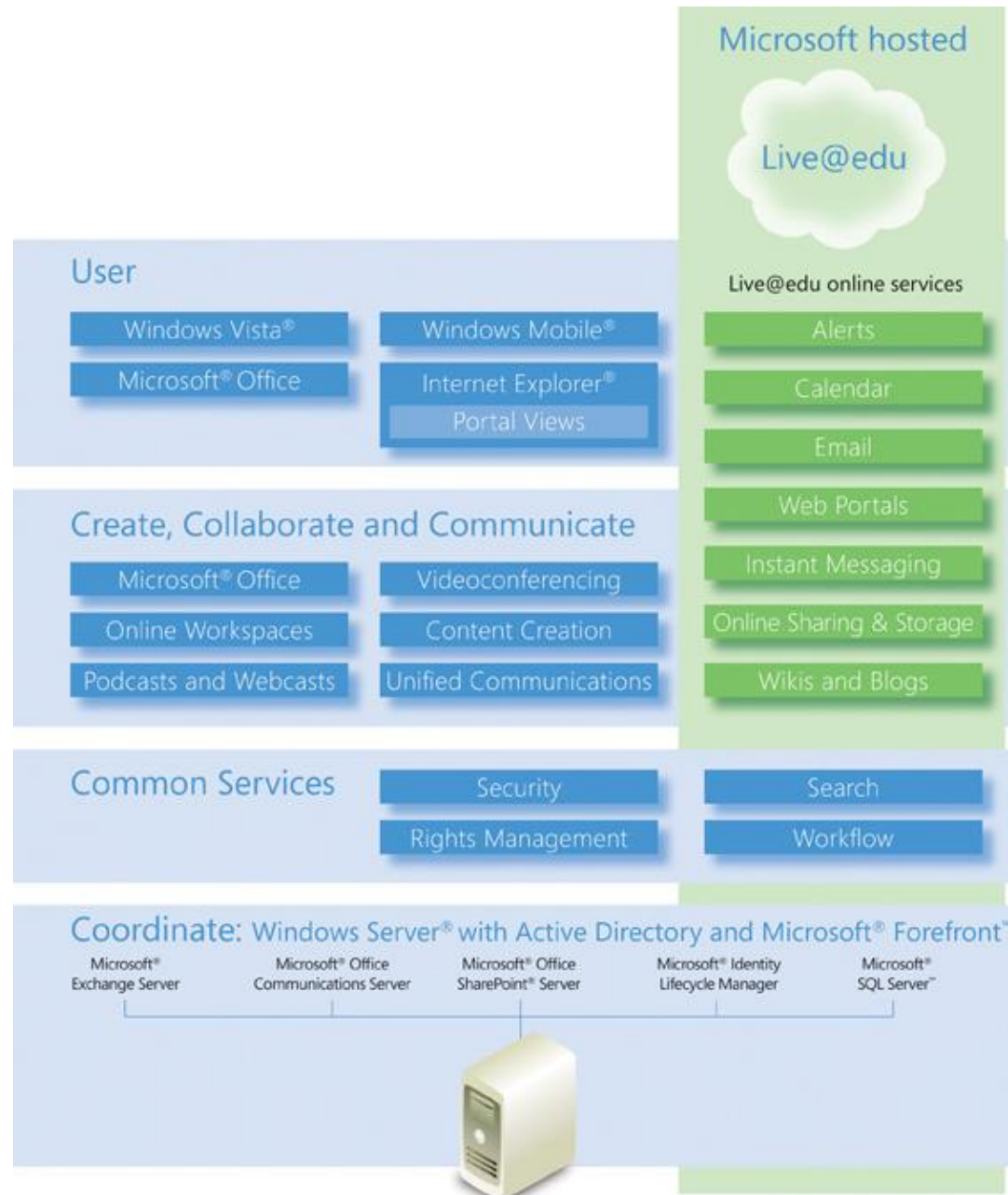
We choose: 50/50

On staging and done:

- ▶ AD-based intranet services
- ▶ LiveID-enabled internet services

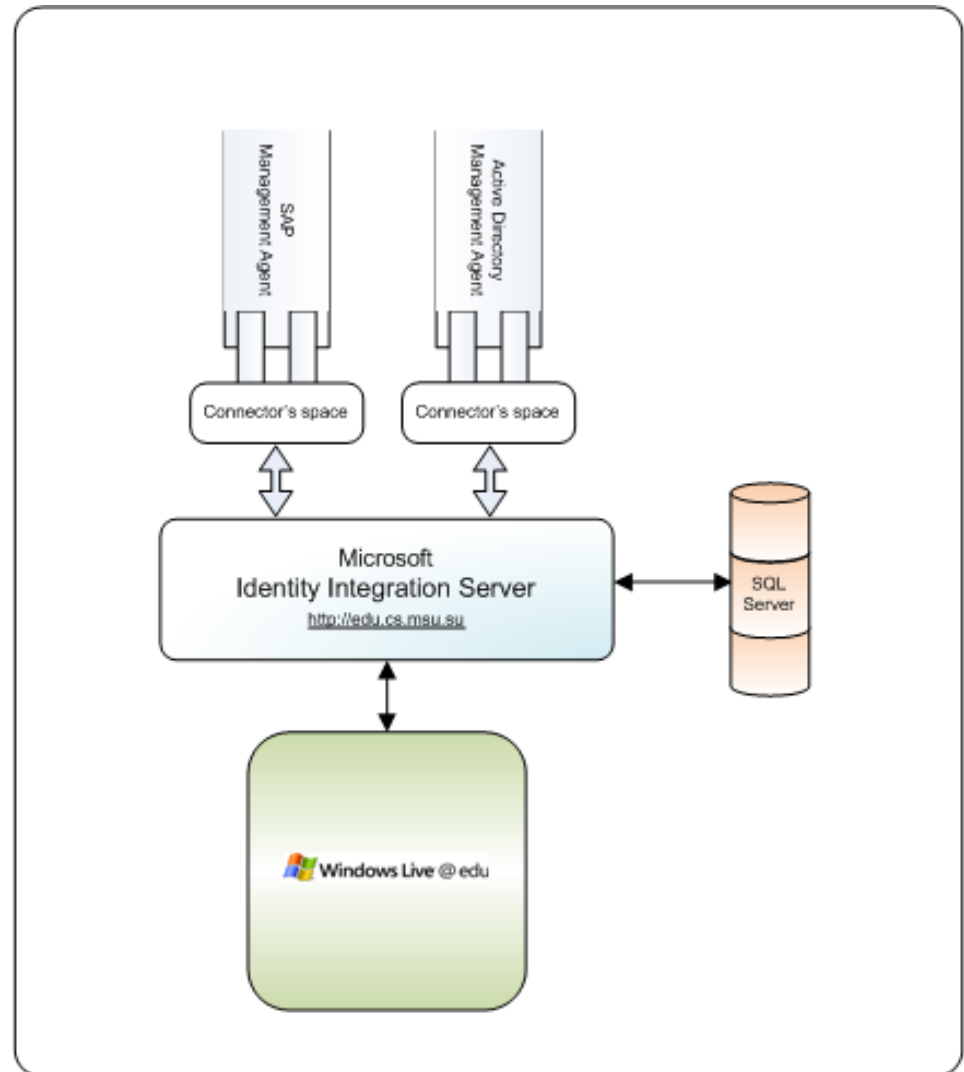
To develop:

1. AD + (LDAP-comp.) Unix + LiveID = SSO
 2. LiveID-enabled applications
- ▶ Web and team sites, computational services, development communities, alumni custom apps, etc.



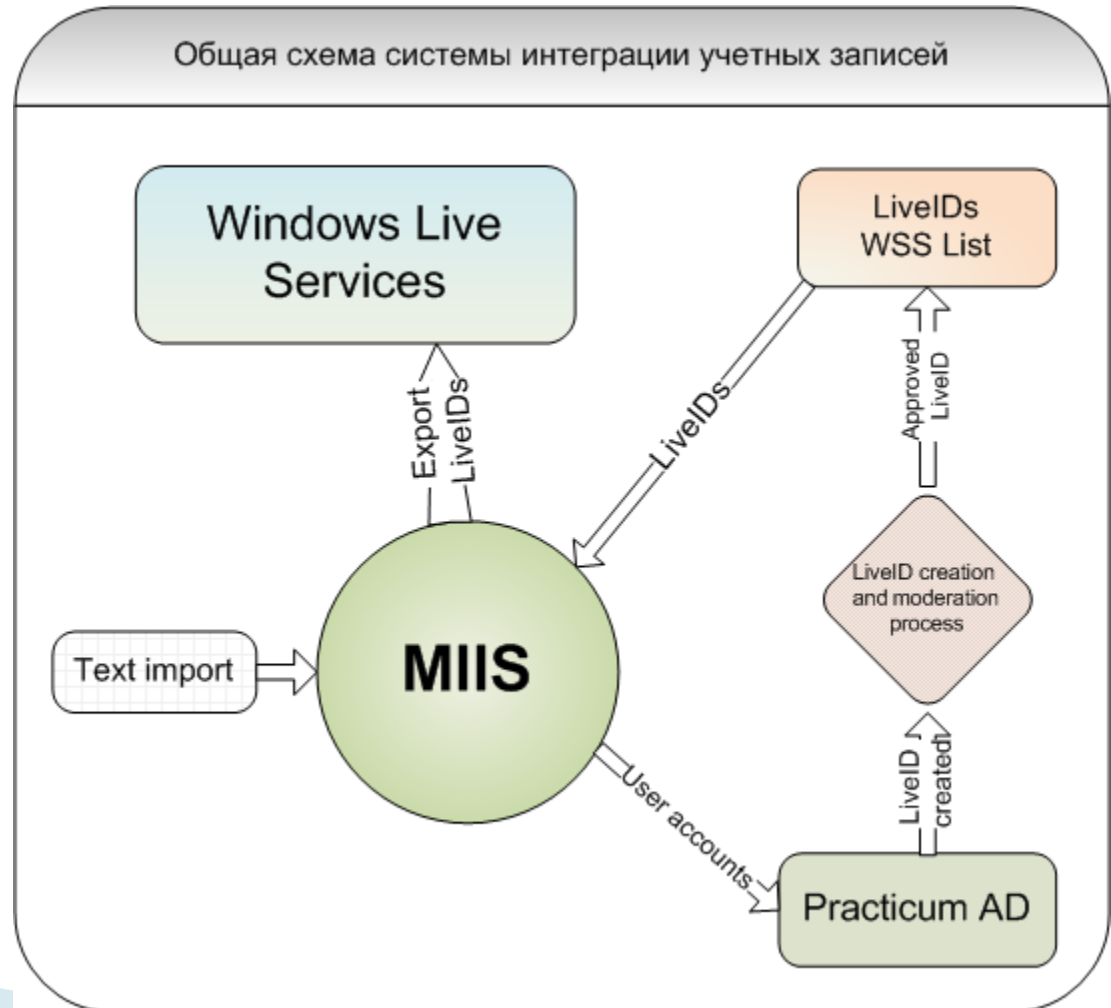
Systems integration

- SAP
- Faculty AD
- MIIS
- SQL Server
- Live Services




How user registration works?

1. User data import
2. Synchronization with Active Directory
3. Creation and approval process for LiveIDs
4. Import LiveIDs to Identity server
5. Export to Windows Live



Opportunities (Live Services)

Client-side and web features (with APIs)

- ▶ Authentication, contact presence
 - ▶ Spaces API, RSS
 - ▶ Sharing
 - ▶ Conversation/messaging
 - ▶ Calendars
 - ▶ Alerts
 - ▶ Client Extensibility (Messenger, Photo Gallery, Writer, Toolbar)
 - ▶ Mobile features
- 

Our plans

- ▶ Single Sign On
- ▶ Services:
 - ELMS
 - SharePoint
 - Team Foundation Server
 - Outlook Live



- ▶ Windows Live – home.live.com
- ▶ Developer Page – dev.live.com
- ▶ Sample Projects – livelabs.com/projects/
- ▶ Live@EDU – my.liveatedu.com
- ▶ Windows Live Developer Center – <http://msdn.microsoft.com/en-us/library/bb264574.aspx>
- ▶ MSTLab – www.mstlab.org



Обязательно попробуйте

L: ANTI-VIRUS, SECURE, YOUR DOMAIN, GB FREE, CAPAME BLOCKER, HOTMAIL

V: VIDEO CHAT, SHARE FILES, LIVE SPACES, PRIVATE, ACCESS FRIENDLY, UPLOADED PHOTOS

@: LIVE MAPS, TALK, STUDENTS, SEND EMAILS, ACCESS ANYWHERE, INSTANT MESSAGES, COMMUNICATE, SEARCH WEB, MOBILE

D: SECURITY, STOP SPAM, STORAGE, SAFETY, E-LERT, TRUST, SENDER ID, SHARE, WORKSPACE, DOCUMENTS, NEW, APPLICATIONS, EDIT

O: LIVE ALERTS, BREAKING NEWS, CAMPUS ANNOUNCEMENTS, CONNECT VIA EMAIL & IM

Вы можете использовать вашу единую учетную запись @edu для доступа к почте Outlook Live, Messenger, Spaces, SkyDrive и многому другому.

Это так просто!



Поддержка PC, Mac и Linux

